

DELIVERING FOR YOU



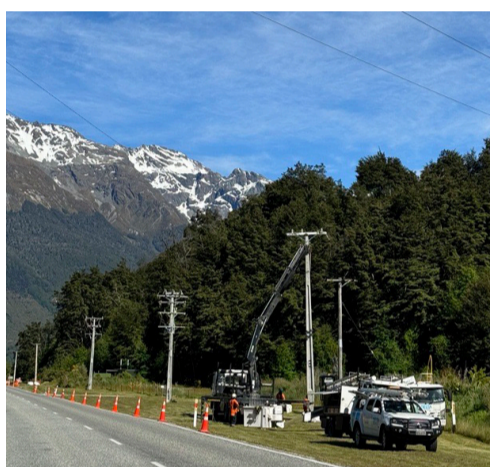
YOUR NETWORK, YOUR NEWS.

Aurora Energy is one of the largest electricity networks in Aotearoa New Zealand. We own and manage the network that delivers electricity to some of the fastest growing areas and over the most diverse terrain in Te Waipounamu, the South Island. We take the electricity from Transpower's national grid to power your homes, businesses and the wider community. We deliver a safe, reliable and sustainable electricity supply across Ōtākou in Tāhuna Queenstown, Central Otago, Wānaka and Ōtepoti Dunedin to over 200,000 people.

TĀHUNA QUEENSTOWN NETWORK

We are midway through a large, five-year work programme and are investing over \$500 million to upgrade the electricity network. Below is a snapshot of major projects either recently completed or currently underway in your area, to ensure future resilience of your electricity supply. Large infrastructure projects can take time to deliver and we hope you enjoy following the updates as they progress. If you would like to keep up to date digitally, email info@auroraenergy.nz to receive a copy of our community updates.

COMPLETE



Glenorchy township

In December and January there were further [improvements to the safety and reliability of the power supply to the Glenorchy area](#) by our contractor Delta.

We replaced and repaired 13 power poles, replaced three transformers, and replaced 1.3km of power lines in the Glenorchy township.

Thank you for your patience while we carried out this work. We were pleased we could provide a generator to Glenorchy School so their prizegiving could go ahead during the work.

UNDERWAY



Queenstown zone substation

Work is underway to upgrade the [Queenstown zone substation](#) that supplies over 2,600 customers in Queenstown and surrounding areas.

Contractors are currently working on the retaining wall. During construction, public access to the walkway in the vicinity of the project site will be restricted to ensure the safety of all community members. We apologise for any inconvenience this causes.

This project will future-proof the network and strengthen the electricity supply for the local community.

UNDERWAY



Arrowtown bundled work

Our contractor ElectroNet is replacing 10 power poles, 13 crossarms, 1.8km of power lines and undergrounding one span of power lines in Arrowtown. We planned these upgrades with local businesses in mind to reduce the impact and generation is being used where possible during planned outages.

Over the next couple of months, there will be ongoing work in the area. This will provide a more reliable power supply for 571 customers in the Arrowtown community.

PRICING CHANGES – WHAT'S COMING UP

For over 100 years, residential line charge prices have been largely based on how much electricity is consumed, regardless of when. The way electricity prices are set is changing, to make them fairer and easier to understand as well as supporting New Zealand's drive towards electrification and decarbonisation.

Aurora Energy is introducing new prices from 1 April 2024, called time-of-use prices. They will be phased in, and prices will be higher during busy peak times and lower when the network is not so busy. This gives you the opportunity to use some of your electricity at off-peak times, when the network isn't as busy and the prices are lower.

Your retailer (who you pay your power bill to) will decide whether to opt-in to our time-of-use prices and how to include these charges on your bill. Many retailers already offer off-peak pricing, so our price signals will complement this.

Head to our website to find out more about electricity pricing at www.auroraenergy.co.nz/pricing

ANY QUESTIONS? GET IN TOUCH!

